

WORTH THE DRIVE IN 2025

---



# OPEN CLASS EXHIBITS



AUGUST 11TH TO 17TH

---

Inside you will find: New and Returning Events,  
Full Schedules, Event Entry Forms, and More!



# TABLE OF CONTENTS

- 2 **Information:** Entry Guidelines, How to Submit an Entry, Entry Tags
- 3 **Information:** Checking In Entries, Release of Exhibits, Premiums and Awards
- 4 **Field & Garden Division:** Open Class Crop - Production Sheaves, Open Class Crop - Field Crops, Open Class Garden Crops
- 5 **Field & Garden Division:** Open Class Flowers, **LEGO Building Contest, Painted Rock Contest, Painted Rock Snake**
- 6 **Competitive Exhibits Division:** Open Class Needlework, **Fabric Challenge**
- 7 **Competitive Exhibits Division:** **Quilting Challenge**, Open Class Arts, Open Class Crafts, **People's Choice Fair Theme Challenge & Upcycle Milk Can**
- 8 **Competitive Exhibits Division:** Open Class Culinary, **Anthem Oats Contest, King Arthur Flour Contest, Dip-Tastic Contest**
- 9 **Competitive Exhibits Division:** Open Class Food Preservation, **Mazatlan Salsa Contest, Allevery Cube Contest**
- 10 **Competitive Exhibits Division:** Open Class Photography, **Primrose Photography Challenge**
- 11 **Competitive Exhibits Events:** Competitive Exhibits Schedule, **Cookie Booth, Shoe Science on Main Smelly Shoe & Tractor Supply Co. Battered Boot Contests**
- 12 **Events:** Jigsaw Puzzle Contest, **Prairie Partner Master Gardeners Presentation, SDPB**
- 13 **Register Now, Thank You Sponsors**

## ENTRY GUIDELINES

**ENTER USING FAIR ENTRY:** <http://bcfair.fairentry.com>

**REGISTRATION DEADLINE FRIDAY August 8th, 2025:**

- All entries must be registered on FairEntry by **Friday, August 8th, 2025**. This will help reduce long lines during the check-in process, as well as reduce congestion in the building for judges and volunteers.
- Registering entries does not mean that you have to have your entry ready for display by Friday, August 8th. Entries must be ready for display by check-in on Monday, August 11th (see Checking In Entries).
- It is strongly encouraged to register any entries you may bring to the fair. If you are unable to bring an entry, there is **NO PENALTY**.
- **The entry form description is for identification purposes only. It should be very concise, provide identifying size and subject to help locate the item by sight. Do NOT include class name/number as part of the description**

**FOR STEP BY STEP INSTRUCTIONS ON HOW TO SUBMIT AN ENTRY PLEASE VISIT:  
[WWW.BROWNCOUNTYSDFAIR.COM/PARTICIPATE/COMPETE](http://WWW.BROWNCOUNTYSDFAIR.COM/PARTICIPATE/COMPETE)**

If you are unfamiliar with FairEntry or do not have access to the internet, please stop by the Fair Office any time Monday through Friday, 8:00 AM to 5:00 PM, or call 605-626-7116 and the staff will gladly assist you!

## ENTRY TAGS

- Anyone who has pre-registered their exhibits by 5:00 PM on Friday, August 1st will be able to pick up their entry cards the following Monday, August 4th after 12:00 PM at the Brown County Fair Office.
- Anyone who has pre-registered their exhibits by Friday, August 8th will be able to pick up their entry cards Sunday, August 10th from 1:00 PM to 5:00 PM OR Monday, August 11th from 11:00 AM to 3:00 PM in the Competitive Exhibits Building. See next page for entry check-in times.

## CHECKING IN ENTRIES

- Please bring your entries Sunday, August 10th from 1:00 PM to 5:00 PM OR Monday, August 11th from 11:00 AM- 3:00 PM OR AFTER 4:00 PM TO THE WEST DOOR. Starting at 4:00 PM the Competitive Exhibits Building will be locked for exhibitors. Only judges and helpers will be allowed in the building at the time of judging. We strongly suggest that all Culinary and Garden Crop Exhibits be brought in Monday to guarantee freshness.
- **Late Entries:** If you do not register by Friday, August 8th, 2025, your exhibits will be judged but will not be eligible for Best of Class, Best of Show or CFEL awards. Please bring your project to the building and you will be provided a colorful entry card to fill out.

## RELEASE OF EXHIBITS

- Release of exhibits will begin **Sunday, August 17th at 5:30 PM to FOOT TRAFFIC ONLY. No exhibits will be released before 5:30 PM.** The Competitive Exhibits Building will close at 5:00 PM to prepare for exhibit release.
- Gates will open to vehicle traffic at 6:00 PM and the Competitive Exhibits Building will remain open until 7:00 PM.
- Any exhibits picked up before release time will forfeit premiums.
- Premiums will be mailed to exhibitors 45 days after the fair closes.

## PREMIUMS AND AWARDS

- Purple ribbons will be awarded to all eligible exhibits in Competitive Exhibits, Field, Garden & Flower Divisions. Any other placing will get a sticker, and ribbons can be requested at the Fair Office.
- **Best of Class and Show Awards:** Premiums for these awards will be mailed to exhibitors 45 days after the fair closes.
- **Special Home Arts, Field, Garden & Flower Division Sweepstakes Awards:** An award will be given to the top Home Arts Division exhibitor and one to the top Field, Garden, & Flower Division Exhibitor. **No application required for this award.** Your exhibit placings will be automatically tallied. Determination for both sweepstakes awards will be made as follows on a point basis on placing received:

**Best of Show:** 10 Points  
**Best of Class:** 10 Points

**Purple:** 7 Points  
**Blue:** 5 Points

**Red:** 3 Points  
**White:** 1 Point

**Each Exhibit:** 1 Point

*Any lots that do not have more than two entries will be removed from their class, but may be entered under the "any other" lot. In order for a lot to be brought back, it must be supported by adequate entries. If you have new lot ideas, please contact the Fair Office at 605-626-7116 or email [fair@browncounty.sd.gov](mailto:fair@browncounty.sd.gov).*



# SOMETHING FOR EVERYONE!

# FIELD & GARDEN

**PLEASE REVIEW DIVISIONS, CLASSES AND LOTS CAREFULLY BEFORE ENTERING YOUR PROJECTS AS THERE HAVE BEEN CHANGES!**

## **OPEN CLASS CROP - PRODUCTION SHEAVES**

1. Small grain sheaves must be stripped of all leaves and the roots must be removed.
2. Small grain sheaves must be 2 1/2" to 3" in diameter.
3. Sheaves must be firmly tied in 3 to 4 places with ribbon or twine.
4. Limit 2 entries per lot.
5. State variety upon entry.
6. All sheaves must have been grown by the exhibitor during the current year.
7. Every precaution is taken for the safekeeping of exhibit(s). The Brown County Fair is not responsible for any loss or damage that may occur.

### **CLASS 1 - PRODUCTION SHEAVES**

Lot 100 Other Sheaves

1. Display with leaves on and all roots removed.
2. Tie with cord or ribbon in 3 to 4 places.
3. Includes Soybeans (3-4" diameter at the base), Edible beans (3-4" diameter at the base), Corn (six stalks), Sunflowers (oil & confectionery, six stalks), and any other sheaves

**Best of Class 1 Award: Lot 100**

## **OPEN CLASS CROP - FIELD CROPS**

1. All samples must have been grown by the exhibitor during the current year with the exception of the following: exhibitors may enter ear corn, shelled corn, sunflowers, soybeans, or grain sorghum seed (or sorghum heads) from the previous crop year.
2. Corn must be 5 ears and forage crops must be 10 heads
3. Limit 2 entries per lot.
4. Every precaution is taken for the safekeeping of exhibit(s). The Brown County Fair is not responsible for any loss or damage that may occur.

### **CLASS 2 - FIELD CROPS**

Lot 101 Any Field Crop

- Please put type in entry description

**Best of Class 2 Award: Lot 101**

## **GARDEN & FLOWER DIVISION**

### **OPEN CLASS GARDEN CROPS**

1. Prepare exhibit according to SD 4-H "Preparing Horticultural Exhibits" available at the Brown County 4-H & Fair Office.
2. Limit 2 entries per lot.
3. Every precaution is taken for the safekeeping of exhibit(s). The Brown County Fair is not responsible for any loss or damage that may occur.

### **CLASS 1 - POTATO & ROOT CROPS**

- Lot 200 White varieties (3 tubers)  
201 Red varieties (3 tubers)  
202 Russet varieties (3 tubers)  
203 Beets for table (3), trim top to 1" length  
204 Carrots (3), do not remove tip of root, trim top to 1" length  
205 Onions, dry (3), trim tops and roots to 2"  
206 Any Other Potato & Root Crop (3)

**Best of Class 1 Award: Lot 200-206**

### **CLASS 2 - VINE CROPS**

- Lot 207 Cucumbers (3), 1/2" stem attached  
208 Melon (1)  
209 Pumpkin (1), stem attached  
210 Squash (1 Winter) or (3 Summer), stem attached  
211 Any Other Vine Crop

**Best of Class 2 Award: Lot 207-211**

### **CLASS 3 - GENERAL CROPS**

- Lot 212 Beans (5), 1/4" stem, uniform string  
213 Peas (5 pods)  
214 Peppers (3), with stems  
215 Peppers (hot) (5), with stems  
216 Sweet corn (3)  
217 Tomatoes (3), ripe without stem  
218 Tomatoes (5), cherry  
219 Any Other Crop

**Best of Class 3 Award: Lot 212-219**

### **CLASS 4 - FRUIT**

- Lot 220 Grapes, plate of 3 bunches, any variety  
221 Raspberries, plate of 5  
222 Any Other Fruit, plate of 3, any variety

**Best of Class 4 Award: Lot 220-222**

### **CLASS 5 - MARKET BASKET - VARIETY PRODUCE**

- Lot 223 Variety basket of 5 Vegetables  
224 Farmers Market Basket, at least 3 items

**Best of Class 5 Award: Lot 223-224**

### **CLASS 6 - HERBS - POTTED**

- Lot 225 Herbs - any variety

**Best of Class 6 Award: Lot 225**

### **CLASS 7 - CREATIVE PLANTERS**

- Lot 226 Flower  
227 Other

**Best of Class 7 Award: Lot 226-227**

### **CLASS 8 - JUNIOR DIVISION** (Must be under 18 years old)

- Lot 228 Mr. and Mrs. Potato Head
1. Use a real potato
  2. Decorate with items of choice
  3. Does not need to be garden produce
- 229 Decorated Pumpkin
4. Decorate a pumpkin no larger than 8 inches with items of choice

**Best of Class 7 Award: Lot 228-229**



## OPEN CLASS FLOWERS

Commercial growers may not compete for prizes, except where listed as professional. Professional: Those whose living is derived from the sale of their work. Indicate upon entry. Flower must be grown by exhibitor except Class 6. No arrangements may be made at the show.

1. Select blooms that are not quite mature at the time of cutting and are free of insect, disease or mechanical damage.
2. Cut stem at an angle using a sharp knife.
3. Cut blooms in late afternoon or early evening, immerse bloom in lukewarm water, set in cool place, and allow flowers to "harden" overnight.
4. All specimens will be in vases provided by the Brown County Fair.
5. Exhibits should have foliage with each bloom, but not below water line.
6. When exhibiting flowers with two or more blossoms, all should be uniform.
7. Exhibitors are urged to read the schedule carefully and comply with the requirements.
8. **Limit of 3 per lot.**
9. Every precaution is taken for the safekeeping of exhibit(s). The Brown County Fair is not responsible for any loss or damage that may occur.

### CLASS 1 - ANNUALS

- Lot 300 Celosia, any variety, 1 stem
- 301 Cosmos, one color, 3 stems
- 302 Marigolds, any variety, 3 stems
- 303 Petunias, any variety, 3 stems
- 304 Snapdragons, one color, 3 stems
- 305 Zinnia, large - over 2", one color, 3 stems
- 306 Zinnia, small - under 2", one color, 3 stems
- 307 Other than named above, 3 stems

**Best of Class 1 Award: Lot 300-307**

### CLASS 2 - PERENNIALS

- Lot 308 Daisies, one color, 3 stems
- 309 Lily
  - a. Lillium/1 stem; b. Hemerocallis/3 stems
- 310 Coneflower, one color, 3 stems
- 311 Phlox, garden, one color, 3 stems
- 312 Other than named above, 3 stems

**Best of Class 2 Award: Lot 308-312**

### CLASS 3 - BULBS & TUBERS

- Lot 313 Bulbs and tubers, any variety

**Best of Class 3 Award: Lot 313**

### CLASS 4 - ROSES

- Lot 314 Roses, any variety (shrubs or other)

**Best of Class 4 Award: Lot 314**

### CLASS 5 - PLANTS

- Lot 315 Houseplant, non-flowering, single specimen
- 316 Cactus, Cacti or Succulent(s)
- 317 Patio plants, single variety or assortment
- 318 Fairy Gardens
- 319 Other than named above

**Best of Class 5 Award: Lot 315-319**

### CLASS 6 - FLORAL ARRANGEMENTS

Indicate homegrown or purchased stem live flowers in description

- Lot 320 Large Arrangement
- 321 Small Arrangement - not over 5"

**Best of Class 6 Award: Lot 320-321**

**BROWN COUNTY FAIR BOARD WILL NOT WATER ANY PLANTS.**



## BUILDING CONTEST

Each age group will be given 15 minutes to create a project based on a theme drawn right before each competition. The projects should be made individually.

Sign up will begin at 4:00 PM on Monday, August 11th. Contestants can sign up once per day in the Competitive Exhibits Building until 3:30 PM on Thursday, August 14th.

**MUST BE PRESENT AT DRAWING TO PARTICIPATE. ONLY TEN PARTICIPANTS WILL BE SELECTED PER AGE GROUP!**

**Date:** Thursday, August 14th

**Location:** Competitive Exhibits Building

**Drawing:** 3:45 PM for all age groups

**Contest:** 4:00 PM

Ages 6 & 7 will compete at 4:00 PM

Ages 8 & 9 will compete at 4:30 PM

Ages 10 to 12 will compete at 5:00 PM

Ages 13 to 99 will compete at 5:30 PM



All projects will be judged on creativity and how closely they represent the theme drawn

**1st, 2nd, and 3rd places will be awarded. Prizes and projects will be displayed for the remainder of the Fair!**

**PRIZES SPONSORED BY THE OBAN FAMILY**

## PAINTED ROCK CONTEST

Ages 3 to 5

Ages 6 to 8

Ages 9 to 14

Ages 15-18

Ages 19 and older



**Tuesday, August 12th, 2025 - 4:00 PM in the Competitive Exhibits Building**  
Decorate and embellish a rock of any size with any style. There will be a 1st and 2nd place winner for each age division. All rocks will be displayed the week of the fair. They can be picked up on Sunday afternoon.  
Brown County Fair T-Shirts will be awarded to the winner of each age group.

**Registration is 4:00 PM, and interview judging begins at 4:30 PM**

**EXHIBITORS SHOULD BE ABLE TO LIFT THEIR ROCK UNASSISTED (NO BOULDERS, PLEASE!)**

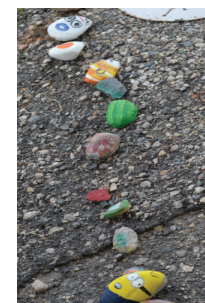
**SPONSORED BY WEBER LANDSCAPING INC.**

## PAINTED ROCK SNAKE

Help us grow our Rock Snake! Decorate and embellish your rock with any medium. The rock snake will be available to start growing on July 1st outside of the Competitive Exhibits Building.

All ages are welcome to participate. All rocks will be displayed through the week of the fair and can be picked up Sunday, August 17th.

Spread the word by taking a picture with your painted rock on the rock snake and tag Brown County Fair on social media!



# NEEDLEWORK

## OPEN CLASS COMPETITIVE EXHIBITS DIVISION

The Competitive Exhibits Division includes open classes in **Needlework, Culinary, Food Preservation, Arts, and Crafts**. Exhibiting is open to anyone. Exhibitors awarded Best of Class or Best of Show will receive a monetary award or gift certificate.

**SEE PAGE 1 FOR ENTRY, CHECK-IN AND RELEASE TIMES!**

**Limit of 3 per lot. Except photography: 2 per lot**

Every precaution is taken for the safekeeping of exhibit(s). The Brown County Fair is not responsible for any loss or damage that may occur.

Articles must be finished within the past year or never exhibited at this Fair to compete. All exhibits must be accompanied by an entry card.

**How to Exhibit:** Suggested hints for preparing items for exhibiting:

1. Block knitted and crocheted items where appropriate.
2. Press garments, clip threads.
3. Display appropriately and neatly.
4. If the item is intended to hang, hanging hardware should be included. Judging, in part, is based on how item is displayed.

**Professional:** Those whose living is derived from the sale of their work. Please indicate upon entry.

## OPEN CLASS NEEDLEWORK

### County "Best of Show" Competition

Nine items will be selected to represent Brown County at the 2025 South Dakota State Fair, one in each of the **Junior, Adult and Senior Citizen Divisions**:

1. Any Needlework
2. **Child's Garment**
3. **Quilted Wall hanging (including hardware) or Pillow, any method**

### CLASS 1 - JUNIOR- 18 YEARS & YOUNGER

### CLASS 2 - ADULTS- 19 YEARS TO 64 YEARS

### CLASS 3 - SENIOR- 65 YEARS & OLDER

### CLASS 4- PEOPLE WITH DISABILITIES

### WEARING APPAREL

#### SUB LOT

#### 400 Children's Garments, new construction

- 401 Adult's Garments, new construction
- 402 Crocheted or Knitted Wearing Apparel
- 403 Altered Wearing Apparel, home sewn or purchased, i.e. sweatshirts, shirt
- 404 Costumes, any
- 405 Any Other Wearing Apparel

**Best of Class Wearing Apparel Award: Lot 400-405**

### HOME ACCESSORIES

#### SUB LOT

- 406 Dish Towels (any method)
- 407 Pot holders & hot mats (any method)
- 408 **Pillows (any method)**
- 409 Place Mats & Tablecloths (any method)
- 410 Doilies & Accessories (any method)
- 411 Any Other Home Accessory

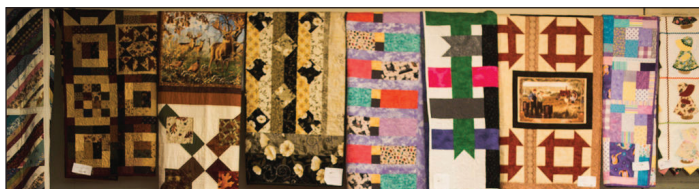
**Best of Class Home Accessories Award: Lot 406-411**

### MACHINE EMBROIDERY

#### SUB LOT

- 412 Any Machine Embroidery

**Best of Class Machine Embroidery Award: Lot 412**



## QUILTS AND QUILTED ITEMS

\*Bed Quilts" include crib, twin, full, queen, king, lap and baby sizes. "Quilted by Exhibitor" includes hand, machine, or long arm quilted.

#### Sub Lot

- 413 Bed Quilts - Hand Appliquéd and Quilted by Exhibitor
- 414 Bed Quilts - Hand Appliquéd (Quilted by Someone Else)
- 415 Bed Quilts - Machine Appliquéd and Quilted by Exhibitor
- 416 Bed Quilts - Machine Appliquéd (Quilted by Someone Else)
- 417 Bed Quilts - Pieced and Quilted by Exhibitor
- 418 Bed Quilts - Pieced by Exhibitor (Quilted by Someone Else)
- 419 Wall Quilts - Pieced and Quilted by Exhibitor
- 420 Wall Quilts - Pieced by Exhibitor (Quilted by Someone Else)
- 421 Art Quilts - All Sizes\* Judged on design in lieu of technique
- 422 Quilted Items - Table Runner, Placemats (2), or Tree Skirt
- 423 Any Other Quilted Item

**Best of Class Quilts and Quilted Items Award: Lot 413-423**

### AFGHANS

Lot 424 Afghans, any method

**Best of Class Afghan Award: Lot 424**

### WALL HANGINGS

**Lot 425 Wall Hangings, any method**

**Best of Class Wall Hangings Award: Lot 425**

**Best of Class 4 Award: Lot 400-425**

### CLASS 5- WOOL APPLIQUE

All fabrics attached on the face of the project entered must be wool or wool blend. Background may be other fabric. Binding can be any fabric. Any thread can be used. Any embellishments can be used.

#### Lot

- 01 Small Size- 12" or less on any side. 12" or less in diameter
- 02 Medium Size- More than 12" but less than 30" on any side or more than 12" but less than 30" diameter
- 03 Large size- 30" or More on any side or diameter

#### Sub Lot

- 428 Hand stitched and made from pattern and/or kit
- 429 Hand stitched and original design
- 430 Machine stitched and made from pattern and/or kit
- 431 Machine stitched and original design

**Prizes will be awarded in each of the 3 Lots and will be furnished by SD Make It With Wool.**



## FABRIC CHALLENGE - CLASS 6 - LOT # 1100

The "Fabric Challenge" is an annual contest held at the Brown County Fair!

#### Rules:

1. The challenge fabric is sold by The Fabric Bin (111 S. Main St., Aberdeen, SD 57401) and a piece measuring approximately 18"x22", along with the contest rules, is available for \$2. Additional quantities of the challenge fabric can be purchased, while supplies last.
2. The finished item must include the challenge fabric.
3. There is no limit on the use of additional fabric in the project or how much of the challenge fabric must be used.

**Please note:** judging emphasis is on creative use of a recognizable amount of the challenge fabric as it relates to other fabrics used, visual impact and workmanship.

4. Each exhibitor may enter one project in this class.

5. Projects should not be larger than 42" in one direction.

**Open to all ages. Youth encouraged to participate.**

No ribbons will be given for placings. Awards will be given as follows:

**1st, 2nd & 3rd Place will be awarded**

**SPONSORED BY THE FABRIC BIN**

## PEOPLE'S CHOICE GROUP QUILTING CHALLENGE

Open to any quilting group (guilds, clubs, or any group of 3 or more quilters).

Collectively create a quilted project. Please consider the theme "Worth the Drive in 2025" as inspiration.

### Requirements:

- Must be a group of 3 or more
- Minimum width and height (or diameter) of 36"
- Must be registered and entered by check-in Monday of the Fair (standard registration deadlines apply)

Fairgoers vote on their favorite quilt by paper ballot during the week of the fair. Judging will close by 3:00 PM on Sunday, August 17th.

The winning quilt will be displayed at the Fabric Bin (111 Main Street, Aberdeen, SD) throughout the month of September 2025. The Fabric Bin will also have the quilt displayed on their website and Facebook page!

## CLASS 7 Lot 1101 Group Quilt Challenge

SPONSORED BY THE FABRIC BIN

## OPEN CLASS ARTS

Every precaution is taken for the safekeeping of exhibit(s). The Brown County Fair is not responsible for any loss or damage that may occur.

### County "Best of Show" Competition

Three items will be selected to represent Brown County at the 2025 South Dakota State Fair, one in each of the Junior, Adult and Senior Citizen Divisions:

1. Art, any media

### CLASS 1 - JUNIOR DIVISION - AGE 18 & YOUNGER

### CLASS 2 - ADULT DIVISION - 19 YEARS TO 64 YEARS

### CLASS 3 - SENIOR CITIZEN DIVISION - 65 YEARS & OLDER

### CLASS 4 - PEOPLE WITH DISABILITIES

- Lot 600 Oil Painting
- 601 Acrylic Painting
- 602 Watercolor Painting
- 603 Diamond Painting
- 604 Drawing, any media (chalk, carbon, charcoal, ink, etc.)
- 605 Mixed Media Art (Combines 2 or more different medias i.e. pencil and ink, or pencil, ink, paint, and foil, etc.)
- 606 Sculptures, any media (metal, welding, wood, plastics, clay, etc.)
- 607 Candle Painting
- 608 Any Other Art

Best of Show- Class 1 Award: 600I-608J

Best of Show- Class 2 Award: 600A- 608A

Best of Show- Class 3 Award: 600S-608S

Best of Class 4 Award: Lot 600D-608D

## PEOPLE'S CHOICE FAIR THEME CHALLENGE

Requirements: Use the fair theme "Worth the Drive in 2025" to get creative. Use your imagination to create a fair-themed project.

### 1 entry per exhibitor

Judged by paper ballot by fairgoers. Judging will close at 3:00 PM on Sunday, August 17th. No ribbon placing will be awarded.

Lot 1116 People's Choice Fair Theme Challenge

OVERALL WINNER WILL BE ANNOUNCED SUNDAY OF FAIR.  
PRIZE WILL BE A GIFT CARD TO THE MARKET ON THE PLAZA

## OPEN CLASS CRAFTS

Every precaution is taken for the safekeeping of exhibit(s). The Brown County Fair is not responsible for any loss or damage that may occur.

### County "Best of Show" Competition

Three items will be selected to represent Brown County at the 2025 South Dakota State Fair, one in each of the Junior, Adult, and Senior Citizen Divisions:

1. Craft

### "HOLIDAY CORNER" CLASS

*Includes but not limited to: Valentine's Day, Easter, Patriotic Holidays, Halloween, Thanksgiving, and Christmas*

- Lot 700 Ornaments
- 701 Dining Table Centerpiece
- 702 Holiday Greeting Card
- 703 Door Decoration
- 704 Other Holiday Craft

"Holiday Corner" Award: Lot 700-704

### "YOUTH PRIDE" ON DISPLAY - AGE 8 & YOUNGER

This is not a judged category. There is no limit to number of entries per lot. On Entry Day, each child receives an award for exhibiting.

If the child wishes to have their exhibit judged please enter under Class 2 Junior Division.

### CLASS 1 - YOUTH PRIDE ON DISPLAY

- Lot 705 Coloring, painting, or drawing freehand - any media
- 706 Paint or color by numbers
- 707 Clay or play dough creation
- 708 Perler bead project
- 709 School project, any
- 710 Any creative project

### CLASS 2 - JUNIOR DIVISION - AGE 18 & YOUNGER

### CLASS 3 - ADULT DIVISION - 19 YEARS TO 64 YEARS

### CLASS 4 - SENIOR CITIZEN DIVISION - 65 YEARS & OLDER

### CLASS 5 - PEOPLE WITH DISABILITIES

- Lot 711 Jewelry
- 712 Handmade card
- 713 Scrapbooking (min. 10 pgs.) - Traditional
- 714 Cricut Projects, any
- 715 Wreaths, any
- 716 Gnome Arts
- 717 Burlap
- 718 Candle Making
- 719 Wood craft (please state if kit or original in description)
- 720 Barn Quilt
- 721 Any Other Craft

Best of Show - Class 2 Award: Lots 711I-721J

Best of Show - Class 3 Award: Lots 711A-721A

Best of Show - Class 4 Award: Lots 711S-721S

Best of Class 5 Award: Lot 711D-721D

### CLASS 6 - UPCYCLED CREATIONS

- Lot 722 Any Upcycled Creations

Best of Class 6 Award: Lot 722

## PEOPLE'S CHOICE UPCYCLE MILK CAN

Grab a milk can and remaster it.

Milk Can will be on display throughout the week of the fair.

Fairgoers will judge projects throughout the week by paper ballot. Judging will close Sunday, August 17th at 3:00 PM. No ribbons will be awarded.

Lot 1106 People's Choice Upcycled Milk Can

OVERALL WINNER WILL BE ANNOUNCED SUNDAY OF FAIR.  
PRIZE WILL BE A GIFT CARD TO THE MARKET ON THE PLAZA

## OPEN CLASS CULINARY

Please place exhibits on a paper plate in a self-sealing bag and include the recipe.

1. No ready mix, please.
2. Limit 3 per lot

### CLASS 1 - COOKIES (3 ON EACH PLATE) 2" DIAMETER

- Lot 900 Rolled & Cut-out
- 901 Drop
- 902 Bar
- 903 Molded/shaped
- 904 Jumbo – (1 cookie) over 4" diameter
- 905 Other than above

**Best of Class 1 Award: Lot 900-905**

### CLASS 2 - CAKES OR CUPCAKES

An entry is 1 whole cake or 3 cupcakes. Exhibit to be out of pan. Exhibitor may claim half of cake after judging is complete. Please indicate on tag if exhibitor will pick up half of cake.

- Lot 906 Any – unfrosted
- 907 Any other – glazed or frosted

**Best of Class 2 Award: Lot 906-907**

**Best of Show Cookies & Cakes: Lot 900-907**

### CLASS 3 - YEAST BREAD

- Lot 908 One loaf bread, any
- 909 Three rolls, any
- 910 Other than above

**Best of Class 3 Award: Lot 908-910**

### CLASS 4 - QUICK BREAD

- Lot 911 One loaf quick bread (banana, nut, fruit)
- 912 Baking powder biscuits (3 in each entry)
- 913 Muffins (3 in each entry)
- 914 Other than above – any type (3 in each entry)

**Best of Class 4 Award: Lot 911-914**

### CLASS 5 - PASTRY

- Lot 915 Pies
- 916 Other than above

**Best of Class 5 Award: Lot 915-916**

**Best of Show Yeast Bread, Quick Bread, and Pastry: Lot 908-916**

### CLASS 6 - CANDY

Each plate to contain 3 pieces and placed in a plastic bag. Must be made from scratch.

- Lot 917 Any Candy

**Best of Class 6 Award: Lot 917**

### CLASS 7 - UPCYCLED PRE-PACKAGED FOODS

- Lot 918 Mixes: Boxed, frozen, refrigerated, etc. - exhibitor has added to pre-packaged food to make it something more

**Best of Class 7 Award: Lot 918**

**Best of Show Candy & Convenience Foods: Lot 917-918**

### CLASS 8 - MAKE IT WITH HONEY

Must have at least 1/4 cup honey in each recipe & provide recipe

- Lot 919 Any cookie or bar
- 920 Bread or buns
- 921 Other

**Best of Class 8 Award: Lot 919-921**

### CLASS 9 - EGGS

1. Eggs will be judged on uniformity of size and color.
2. Twelve chicken eggs must be presented, washed and in an egg carton.

- Lot 922 Any Eggs
  - Must be the same color

PLEASE  
BRING ALL  
PERISHABLE/  
REFRIGERATED  
ENTRIES  
AUGUST 11th TO  
GUARANTEE  
FRESHNESS

### CLASS 10 - CHARCUTERIE BOARD

Board will be judged on presentation of product  
Please provide a picture of your Board to display after judging  
Charcuterie Boards will be available to pick up Tuesday Morning at 10 AM.

- Lot 923 Dessert
- 924 Fresh Produce (Fruits or Vegetables)
- 925 Classic (Meat/Cheese, etc.)
- 926 Fair Theme
- 927 Other than above

Will refrigerate as space allows.

## ANTHEM OATS CONTEST

ALL AGES CONTEST

Anthem Oats provides useful prizes for the top 3 places in this special baking contest!

**Contest Recipe:** \*All exhibitors who enter must use Anthem Oats in their recipe\*

**\*To be eligible to win Anthem Oats prizes, contestants must use Anthem Oats in their recipe and provide proof of purchase (UPC Code from Anthem Oats packaging or receipt).\***

- Lot 1118 Any Recipe - must use Anthem Oats

**SHOP NOW:** Locally at Natural Abundance, Ken's Super Fair Foods and Kessler's Grocery OR check out their website [www.anthem oats.com](http://www.anthem oats.com)

# ANTHEM™

SOUTH • 1882 • DAKOTA

## KING ARTHUR FLOUR CONTEST

ALL AGES CONTEST

King Arthur Flour provides prizes for the top 3 places in this special baking contest!

**Contest Recipe:** Any recipe made with a locally grown ingredient \*All exhibitors who enter must use King Arthur Flour in their recipe\*

**\*To be eligible to win King Arthur Flour prizes, contestants must use King Arthur Flour in their recipe and provide proof of purchase (UPC Code from flour bag or receipt).\***

- Lot 1117 Any Recipe - must use King Arthur Flour and locally grown ingredient i.e Zucchini, Rhubarb, etc.

**KING ARTHUR FLOUR PROVIDES PRIZES  
AND GORGEOUS RIBBONS FOR EACH  
WINNER!**



## DIP-TASTIC CONTEST

Bring your best hot or cold dip- or enter one of each. All dips should be savory (not sweet). Please serve with crackers, chips or dipping vehicle of your choice.

All entries must have a recipe included.

**PRIZE PROVIDED BY:**  
**LONE WOLF SPICES**  
(Stop by my outdoor vendor booth)

Sunday, August 17th @ 12:00 pm



# FOOD PRESERVATION

## OPEN CLASS FOOD PRESERVATION

### County "Best of Show" Competition

Three items will be selected to represent Brown County at the 2025 South Dakota State Fair, one in each of the Junior, Adult, and Senior Citizen Divisions.

#### Qualifying Classes:

- **Canning: Jellies/Jams** (*one-half pint clear glass jar*)
- **Pickles** (*one pint or quart clear glass jar*)

### CLASS 1 - CANNED VEGETABLES & FRUITS

- Lot 1000 Tomatoes – whole
- 1001 Tomatoes – other
- 1002 Vegetable, pressure canned
- 1003 Any other fruit or vegetable
- 1004 Salsas

Best of Class 1 Award: Lot 1000-1004

### CLASS 2 - PICKLES

**Junior - 18 Years & Younger - Qualifies for Best of Show**  
**Adult - 19 Years to 64 Years - Qualifies for Best of Show**  
**Senior Citizen - 65 Years & Older - Qualifies for Best of Show**

- Lot 1005 Dill
- 1006 Beet
- 1007 Relish
- 1008 Any other pickle

Best of Class Pickles Award for each age division: Lot 1005-1008

### CLASS 3 - JAMS & JELLIES

**Junior - 18 Years & Younger - Qualifies for Best of Show**  
**Adult - 19 Years to 64 Years - Qualifies for Best of Show**  
**Senior Citizen - 65 Years & Older - Qualifies for Best of Show**

- Lot 1009 Jelly – 1 jar
- 1010 Jam – 1 jar

Best of Class Jams & Jellies Award for each age division: Lot 1009-1010

### CLASS 4 - DRIED FOODS

- Lot 1011 Any dried food

Best of Class 4 Award: Lot 1011

### CLASS 5 - FOOD MIXES IN A JAR

- Lot 1012 Any Food Mix
- 1013 Any Drink Mix

Best of Class 5 Award: Lot 1012-1013

### CLASS 6 - HOMEMADE WINE - (INDICATE IN DESCRIPTION IF KIT)

- Lot 1014 Any homemade wine

Best of Class 6 Award: Lot 1014

### CLASS 7 - PLACE SETTINGS

A 24" x 24" area will be provided. Bring a place mat and one complete table setting, which may include some or all of the following: dinner plate, salad plate, bowl, glassware, cup, saucer, tableware and napkin. No centerpiece needed.

- Lot 1015 Fair Theme/ Worth the Drive in 2025
- 1016 Holiday Fun
- 1017 Summer Fun
- 1018 Children's Party

Best of Class 7 Award: Lot 1015-1018



## CLASS 7 SALSA CONTEST

**SATURDAY, AUGUST 16TH,  
2025**

**Entry:** 10:45 AM-12:00 PM  
**Judging:** 12:00 PM- 1:30 PM

Lot 1119 Canned  
 1120 Fresh Salsa (Not Canned)

MAZATLAN



Mexican Restaurant

**SPONSORED BY: MAZATLAN MEXICAN RESTAURANT**

**Presentation of Winning Entries, Public Tasting at 2:00 PM**

#### AWARDS:

**Overall winner in each class - \$30 Gift Certificate**  
**Two Honorable Mention Winners - \$15 Gift Certificate**

#### Guidelines:

1. Entries will not be returned, they will be divided into samples for the audience.
2. Contest is intended for amateurs, however all are welcome. If you are a commercial producer, please note on your sign up sheet.
3. All entries must be accompanied by the recipe, typewritten or neatly printed on a recipe card. Ingredients must be listed in exact measurements and the type of ingredient must be specified (i.e.: Roma Tomatoes). All preparation steps, pan size, temperature and baking time must be specified.

#### Judging Criteria:

Texture, color	40 pts
Flavor, consistency, appearance	40 pts
Overall appearance and attractiveness	15 pts
Originality: Craft and presentation	5 pts
	100 pts

**Decisions are the sole responsibility of the Brown County Fair judges and are final.**

Winners will be announced and prizes awarded prior to offering audience samples. Contestants may ask gate keeper to call for a courtesy cart ride to facilitate bringing entry to the Competitive Exhibits Building.

**Judged by Mazatlan Mexican Restaurant Salsa Connoisseur**

## CUBE CONTESTS

In 2025, the Brown County Fair will display One Contest Cube in the Competitive Exhibits Building for all ages.

Winners will be drawn daily, and the amount of items in the cubes will change daily. Winners will be contacted via phone the following day and will be able to pick up their prize at the Odds Office the following morning at 10:00 AM.



**SPONSORED BY:  
THUNDER ROAD &  
ALLEVITY ENTERTAINMENT**



# PHOTOGRAPHY

## OPEN CLASS PHOTOGRAPHY

1. Picture taken within last year.
2. Photographs must be at least 8"x10" with maximum size allowable to be 11"x17", (1) panoramic or (4) 4"x6" of one category.
3. Each lot must be mounted on a vertical 16"x20" white mounting mat board. The word vertical means taller than wide. Pictures should be mounted directly on the mat board. Rubber cement should be used in the mounting, with two coats of rubber cement used.
4. Attach entry tag with string to the back of the entry so the tag will hang over the upper left-hand corner of the mat. Do not staple or alter tags.
5. White borders should be removed or covered and edges should be straight.
6. No preparation for hanging is necessary. Fair committee will display exhibits in vertical position.
7. **Professional:** Those whose living is derived from the sale of their work. Indicate on entry tag.
8. **Limit 2 per lot.**
9. Every precaution is taken for the safekeeping of exhibit(s). The Brown County Fair is not responsible for any loss or damage that may occur.

### County "Best of Show" Competition

Three items will be selected to represent Brown County at the 2025 South Dakota State Fair; one from the Junior, Adult and Senior Citizen Divisions:

1. **Junior photography (18 years and Under)**
2. **Adult photography (19 years to 64 years)**
3. **Senior Photography (65 years and Older)**

**CLASS 1 - JUNIOR DIVISION - COLOR (18 & YOUNGER)**

**CLASS 2 - JUNIOR DIVISION - B&W (18 & YOUNGER)**

**CLASS 3 - ADULT DIVISION - COLOR (19 YEARS TO 64 YEARS)**

**CLASS 4 - ADULT DIVISION - B&W (19 YEARS TO 64 YEARS)**

**CLASS 5 - SENIOR CITIZEN DIVISION - COLOR (65 YEARS & OLDER)**

**CLASS 6 - SENIOR CITIZEN DIVISION - B&W (65 YEARS & OLDER)**

**CLASS 7 - PROFESSIONAL - COLOR (ANY AGE)**

**CLASS 8 - PROFESSIONAL - B&W (ANY AGE)**

- Lot 800 Animal/Insect
- 801 People/ Person
- 802 Building Architecture & Interiors
- 803 Nature
- 804 Still Life
- 805 Scenery, Landscape
- 806 Action Pictures
- 807 Aerial/ Drone
- 808 2025 Color of the Year- RED
- 809 Framed- Any Subject
- 810 Digitally Enhanced- Any Subject
- 811 Any Other Art



Best of Class 1 Award  
Best of Class 2 Award  
Best of Show Classes 1 & 2  
Best of Class 3 Award  
Best of Class 4 Award  
Best of Show Classes 3 & 4  
Best of Class 5 Award  
Best of Class 6 Award  
Best of Show Classes 5 & 6  
Best of Class 7 Award  
Best of Class 8 Award

### CLASS 9 - PRIMROSE SENIOR PHOTOGRAPHY CHALLENGE

Exhibitors must be ages 55+ to enter challenge. Photography division rules apply. Entries in this challenge will not qualify for County "Best of Show" Competition.

- Lot 812 Any Subject- Senior Color
- 813 Any Subject- Senior B&W

Best of Class 9 Award - Lot 812  
Best of Class 9 Award - Lot 813

**\$100 Chamber gift cards**  
**Sponsored by: Primrose Retirement Communities**



**Are you 55+ and love to take photos?**

Enter the **Primrose Senior Photography Contest** when you enter the Home Arts Photography Division and be eligible for one of two \$100 Chamber gift cards!

Don't forget to join us on **Wednesday, August 13th** for **Primrose Senior Day!**

PrimroseRetirement.com

**BROWN COUNTY FAIR**

**VOLUNTEERS NEEDED**



**Sign Up Online NOW**



605-626-7116  
**BrownCountySDFair.com**  
Click the link - **VOLUNTEERS**

## COMPETITIVE EXHIBITS

Competition Judges • Superintendents • Contest Helpers  
Quilt Hangers • Entry Cards • Set Up • Building Monitors

**BROWN COUNTY FAIR  
WORTH THE DRIVE IN 2025**

# COMPETITIVE EXHIBITS SCHEDULE

**SUNDAY, August 10th**  
1:00 p.m. - 5:00 p.m.

Entry Card Pick-up and Project Drop Off

**MONDAY, August 11th**

11:00 a.m. - 3:00 p.m.  
3:30 p.m.  
4:00 p.m.

Entry Card Pick-up and Project Drop Off  
Judges and Helpers meeting  
Judging

*Building is closed to all exhibitors and public*

**TUESDAY, AUGUST 12th**

11:00 a.m. - 8:00 p.m.  
12:00 p.m.  
2:00 p.m.  
4:00 p.m.  
4:30 p.m.

Competitive Exhibits Building Open to Public  
Hat Pyrography- Stacy Baadte, For You Boutique  
Simple Sourdough- Sweet Pea Cakery  
Painted Rock Contest- **Registration**  
Painted Rock Contest- *Sponsored by Weber Landscaping, Inc.*

**WEDNESDAY, AUGUST 13th**

10:00 a.m. - 8:00 p.m.  
11:30 a.m.

Competitive Exhibits Building Open to Public  
Boost your Brain- Tiffany Hoeft,  
Minds Matter PLLC

1:00 p.m.  
1:30 p.m.  
4:00 p.m.

Jigsaw Puzzle Contest- **Check-In**  
Jigsaw Puzzle Contest- *Sponsored by City Lights*  
Weed Control- Tara Bierman,  
Master Gardener

**THURSDAY, AUGUST 14th**

10:00 a.m. - 8:00 p.m.  
10:30 a.m.  
12:00 p.m.  
2:00 p.m.  
  
3:45 p.m.  
4:00 p.m.

Competitive Exhibits Building Open to Public  
Story Time- K.O. Lee Library  
Platter Perfection- Courtney Wolff  
Bacon Fried Rice- South Dakota Pork  
Producers Council  
Lego Contest- **Contestant Drawing**  
Lego Contest- *Sponsored by The Oban Family*

**FRIDAY, AUGUST 15th - Meet SDPB Personality Larry Rohrer**

10:00 a.m. - 8:00 p.m.  
12:00 p.m.  
1:00 p.m. - 6:00 p.m.  
2:00 p.m.

Competitive Exhibits Building Open to Public  
1951 Economic Development- Troy McQuillen  
Meet SDPB personality Larry Rohrer  
Picking an APPLE off your tree. Brought to you by:  
50 YRS of Aberdeen Area Genealogical Society

**SATURDAY, AUGUST 16th**

10:00 a.m. - 8:00 p.m.  
10:30 a.m.  
  
10:45 a.m. - 12:00 p.m.  
12:00 p.m.

Competitive Exhibits Building Open to Public  
Smelly Shoe & Battered Boot Showdown  
*Winners announced in Ken's Tent*  
Salsa Contest- **Registration**  
Salsa Contest- *Sponsored by Mazatlan Mexican Restaurant*  
Public Tasting to follow Salsa Contest  
What Kind of Tree Should I Plant- Aaron Kiesz,  
Aberdeen City Forester

**SUNDAY, August 17th**

10:00 a.m. - 5:00 p.m.  
12:00 p.m.  
12:30 pm.



5:30 p.m. - 7:00 p.m.  
5:30 p.m. - 6:00 p.m.

Competitive Exhibits Building Open to Public  
Dip-Tastic Registration  
Dip-Tastic Contest  
*People's Choice- public judging*  
Release of Open Class Competitive Exhibits  
**Foot Traffic Only**  
*Gate A will open to vehicle traffic at 6:00 PM.  
Please exit through Gate B.*



**COOKIE  
BOOTH**



**SHOE SCIENCE**  
ON MAIN

## SMELLY SHOE SHOWDOWN

Do you have a pair of old shoes or boots that are downright revolting? Put them up against other worn out, disgusting footwear at the Brown County Fair in the Battered Boot/ Smelly Shoe Showdown sponsored by Shoe Science and Tractor Supply Co.

Drop off your gross shoes to Shoe Science on Main between August 4th and August 11th. The Shoe Scientists will find the 10 most gnarly pairs and bring them to the Competitive Exhibits Building for a head to head showdown! During the same timeframe, boots should be taken to TSC. Judging criteria will be smell, stains, and damage. Two winners are selected and walk away with \$150 gift cards to Shoe Science on Main or TSC! All shoes will then be repaired and donated to third world countries!

Winner will be announced at 11 a.m. in the Ken's Tent prior to the Hot Dog Eating Contest.



**TSC TRACTOR  
SUPPLY CO.**

**FOR LIFE OUT HERE®**

# COMPETITIVE EXHIBITS EVENTS

## JIGSAW PUZZLE CONTEST

**Sponsored By:**



\*one Team per Registration\*

**20 Team Limit**

### PRELIMINARY CONTEST

**August 7th, 2025**

**Location:** City Lights  
Bar & Event Center  
316 S. 2nd St, Aberdeen

**Check In:** 5:15pm

**Contest:** 5:30pm

### FINALS CONTEST

**August 13th, 2025**

**Location:** Competitive  
Exhibits Building -  
Brown County Fair

**Check In:** 1:00pm

**Contest:** 1:30pm

**Registration**

**Deadline:**

**August 5, 2025**



**Entry Form**

<https://browncountysdfair.com/participate/compete/>

**EACH TEAM MUST CONSIST OF 3 OR 4 MEMBERS**

- Each team receives the same puzzle - boxes are placed face down until the competition starts
- Both rounds of the competition will be 2 hours long
- If there is no declared winner by the end of the time limit, the winner is chosen by their remaining pieces
- In the event of a tie, teams can be given an additional five minutes to work on the puzzle
- There are no devices or outside assistance permitted while working on a puzzle
- Two moderators help with the event along with 4-6 timers, walking around the contest watching timing reasons.
- Teams are not allowed to distract or approach team tables when the competition is in progress
- Must assemble a 300-piece puzzle in 2 hours for the Preliminary Round & a 500-Piece puzzle for the Finals.
- Top 8 Teams will move on to the Finals on Wed., August 13th at 1:00pm (Check In) - Competitive Exhibits Bldg
- Prizes awarded to the top 3 teams in the Finals

**TOP 8 TEAMS MOVE ONTO THE FINALS - PRIZES AWARDED TO TOP 3 TEAMS IN THE FINALS!**

## PRAIRIE PARTNER MASTER GARDENERS

Visit with the Prairie Partner Master Gardeners in the Competitive Exhibits Building any time between 10:00 AM to 9:00 PM, Wednesday through Saturday, and 11:00 AM to 5:00 PM on Sunday of the Fair! The Master Gardeners will answer any gardening and landscaping questions, as well as offer free literature on most horticulture topics.

They will be hosting the Prairie Partners Master Gardeners Series again in 2025! See the schedule below for more information!

**WEDNESDAY, AUG. 13TH - 4:00 PM: "Weed Control"**

*Presented by Tara Bierman, Prairie Partners Master Gardener*

**SATURDAY, AUG. 16TH - 2:30 PM: "What Kind of Tree Should I Plant"**

*Presented by Aaron Kiesz, Aberdeen City Forester*

TUNE IN NOW

**Good,  
useful,  
and full  
of wonder.**

**SDPB**

SDPB.ORG

## COMPETITIVE EXHIBITS SPONSORS

# REGISTER

*now*

SCAN THE QR CODE OR  
FOLLOW THE LINK  
BELOW TO REGISTER  
FOR OPEN CLASS  
COMPETITIVE EXHIBITS  
AND LIVESTOCK



[HTTPS://BROWNCOUNTYSDFAIR.COM/PARTICIPATE/COMPETE/](https://browncountysdfair.com/participate/compete/)

## THANK YOU TO OUR SPONSORS

Anthem Oats  
City Lights  
Brown County CFEL Clubs  
-Bath Loyal Workers  
-BR Neighbors Club  
-Diligent Dozen  
In Memory of  
Lois Davis & Jeanne Dell  
-Rip & Ravel  
King Arthur Flour

Lone Wolf Spices  
Mazatlan Mexican Restaurant  
Primrose Retirement Communities  
Shoe Science  
South Dakota Public Broadcasting  
SD Make it with Wool  
The Fabric Bin  
The Oban Family  
Tractor Supply Co.  
Weber Landscaping, Inc.

**DISCLAIMER:** EVERY PRECAUTION IS TAKEN FOR THE SAFEKEEPING OF EXHIBIT(S).  
THE BROWN COUNTY FAIR IS NOT RESPONSIBLE FOR ANY LOSS OR DAMAGE THAT MAY OCCUR.